



410 W Center Ave - Suite 202 | Visalia, CA

Property For Lease

1005 N Demaree Street
Visalia, California 93291
O | 559.754.3020
F | 559.429.4016
www.mdgre.com

GRAHAM | **& ASSOCIATES**

Matt Graham
Lic# 01804235
www.mdgre.com

to learn more, visit: www.mdgre.com

PROPERTY DETAILS

Address 401 W Center Ave - Suite 202 | Visalia, CA

Square Feet Available 275 +/- Sq. Ft.

Zoning CDT

Lease Rate \$650.00 Per Month

Lease Type Gross

Additional Comments:

Executive suite available in Center Street Plaza office complex. Great location on Center Street in downtown Visalia. Walking distance from numerous restaurants, shops and banking. Please call for further details.



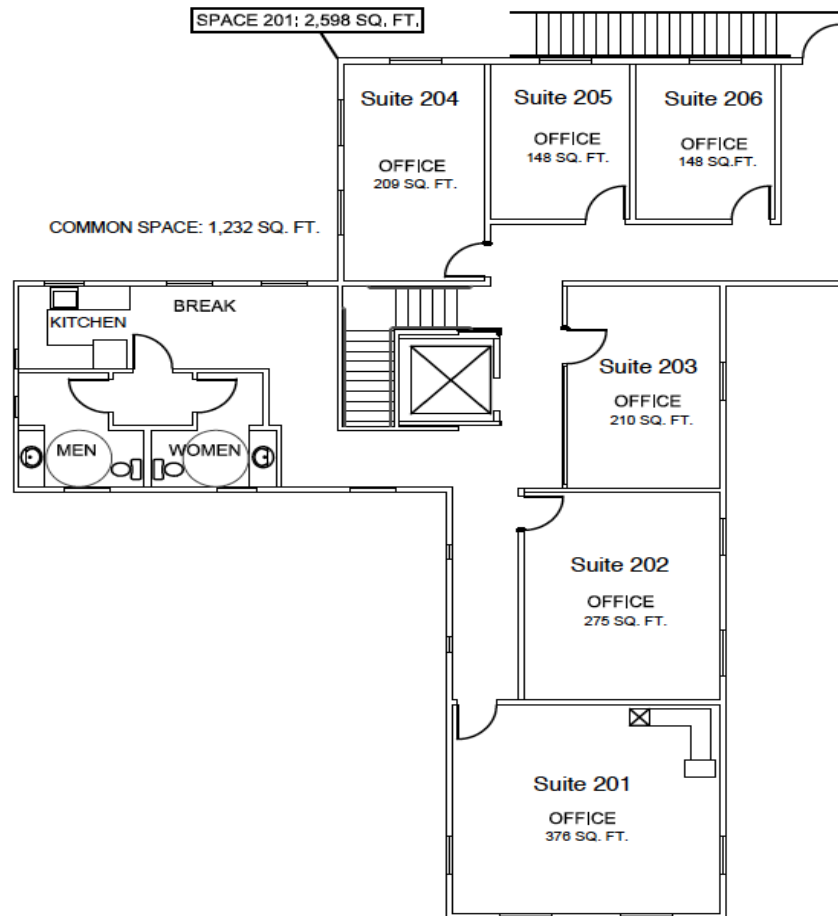
Contact Broker:
Matt Graham
Lic# 01804235

to learn more, visit: www.mdgre.com

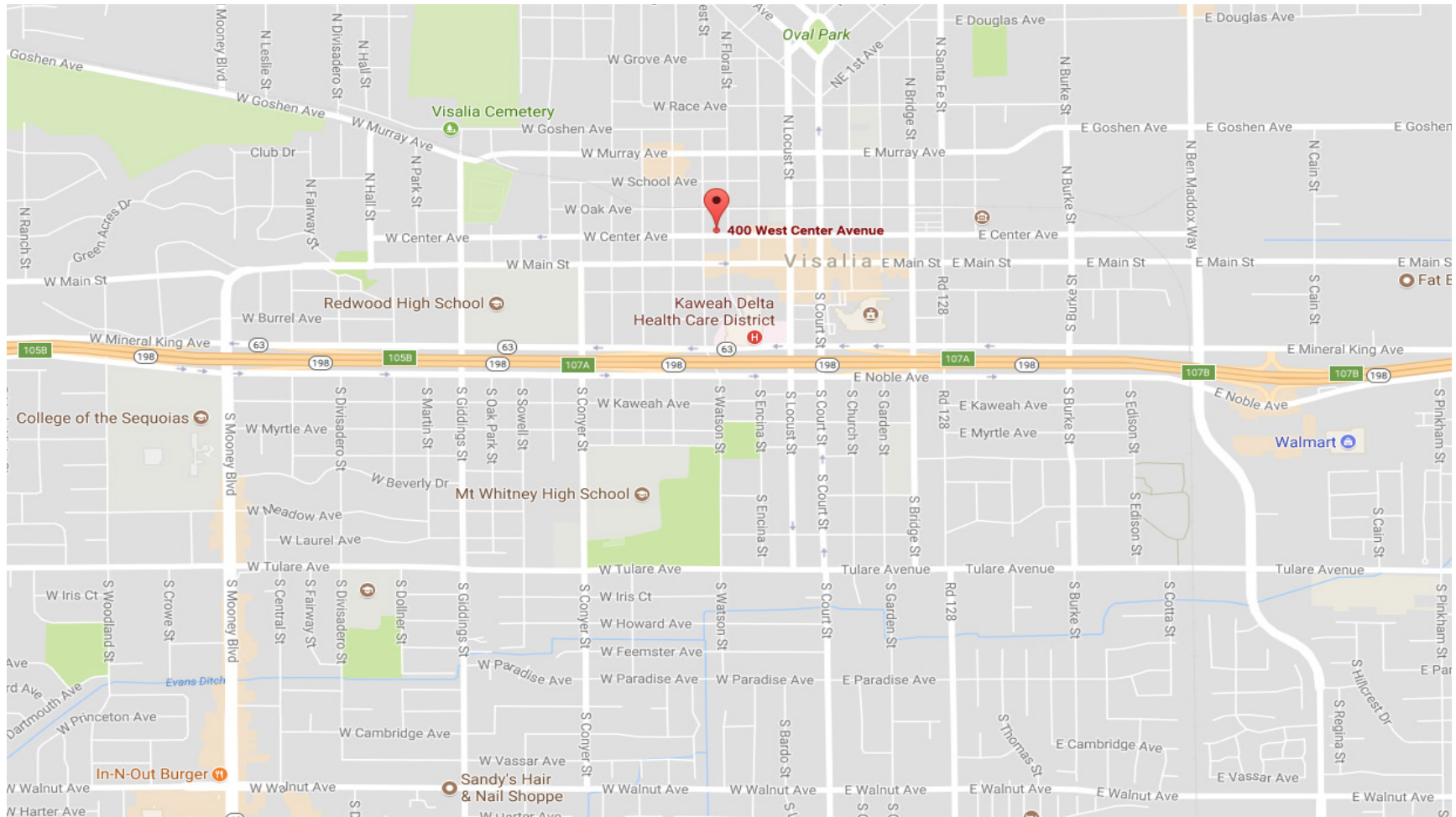
1005 N Demaree Street
Visalia, California 93291
O | 559.754.3020

PLEASE NOTE: ALL INFORMATION AND REPRESENTATION MADE HEREIN, WHILE NOT GUARANTEED, HAVE BEEN SECURED FROM SOURCES WE BELIEVE TO BE RELIABLE, HOWEVER, THEY ARE NOT WARRANTED BY MATT GRAHAM & ASSOCIATES AND ARE SUBJECT TO CHANGE WITHOUT NOTICE.

FLOOR PLAN

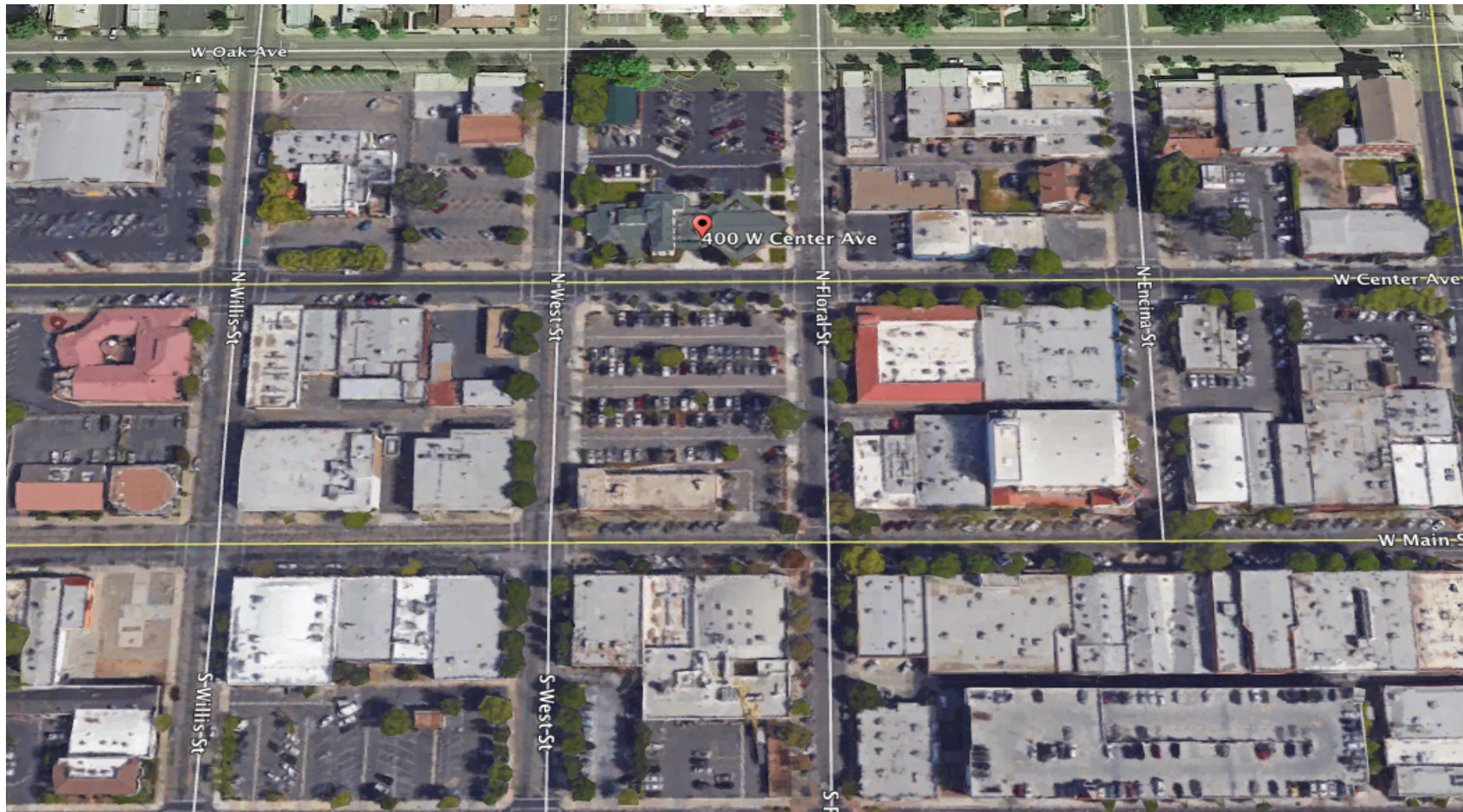


LOCATION MAP



PLEASE NOTE: ALL INFORMATION AND REPRESENTATION MADE HEREIN, WHILE NOT GUARANTEED, HAVE BEEN SECURED FROM SOURCES WE BELIEVE TO BE RELIABLE, HOWEVER, THEY ARE NOT WARRANTED BY MATT GRAHAM & ASSOCIATES AND ARE SUBJECT TO CHANGE WITHOUT NOTICE.

PROPERTY LAYOUT



PLEASE NOTE: ALL INFORMATION AND REPRESENTATION MADE HEREIN, WHILE NOT GUARANTEED, HAVE BEEN SECURED FROM SOURCES WE BELIEVE TO BE RELIABLE, HOWEVER, THEY ARE NOT WARRANTED BY MATT GRAHAM & ASSOCIATES AND ARE SUBJECT TO CHANGE WITHOUT NOTICE.