



508 S Chinowth | Visalia, CA

Property For Lease

100 W. Willow St. - STE 301  
Visalia CA 93291  
559.804.9371

**GRAHAM** | **& ASSOCIATES**

Matt Graham  
Lic# 01804235  
[www.mgdre.com](http://www.mgdre.com)

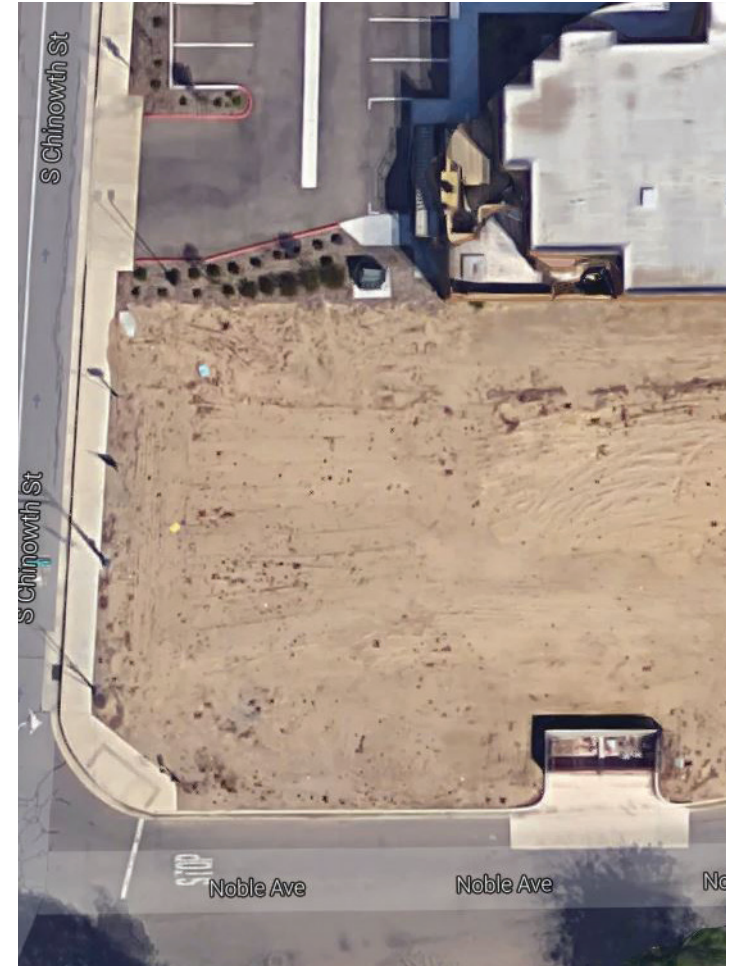
to learn more, visit: [www.mgdre.com](http://www.mgdre.com)

## PROPERTY DETAILS

<b>Address:</b>	508 S Chinowth, Visalia CA 93291
<b>Square Feet Available:</b>	8000+/- Sq. Ft.
<b>Zoning</b>	Prof. Admin
<b>Lease Type</b>	Tripple Net
<b>Lease Rate</b>	\$TBD

### Additional Comments:

8,000 sq. ft. Class "A" multi-tenant or single office building to be built on 22,474 sq. ft. parcel. Tenant improvements to be built exactly to your desired floor plan. Individual suites can be demised to as small as 2,500 sq. ft. The property can accommodate medical and general office users. Please call for further details.

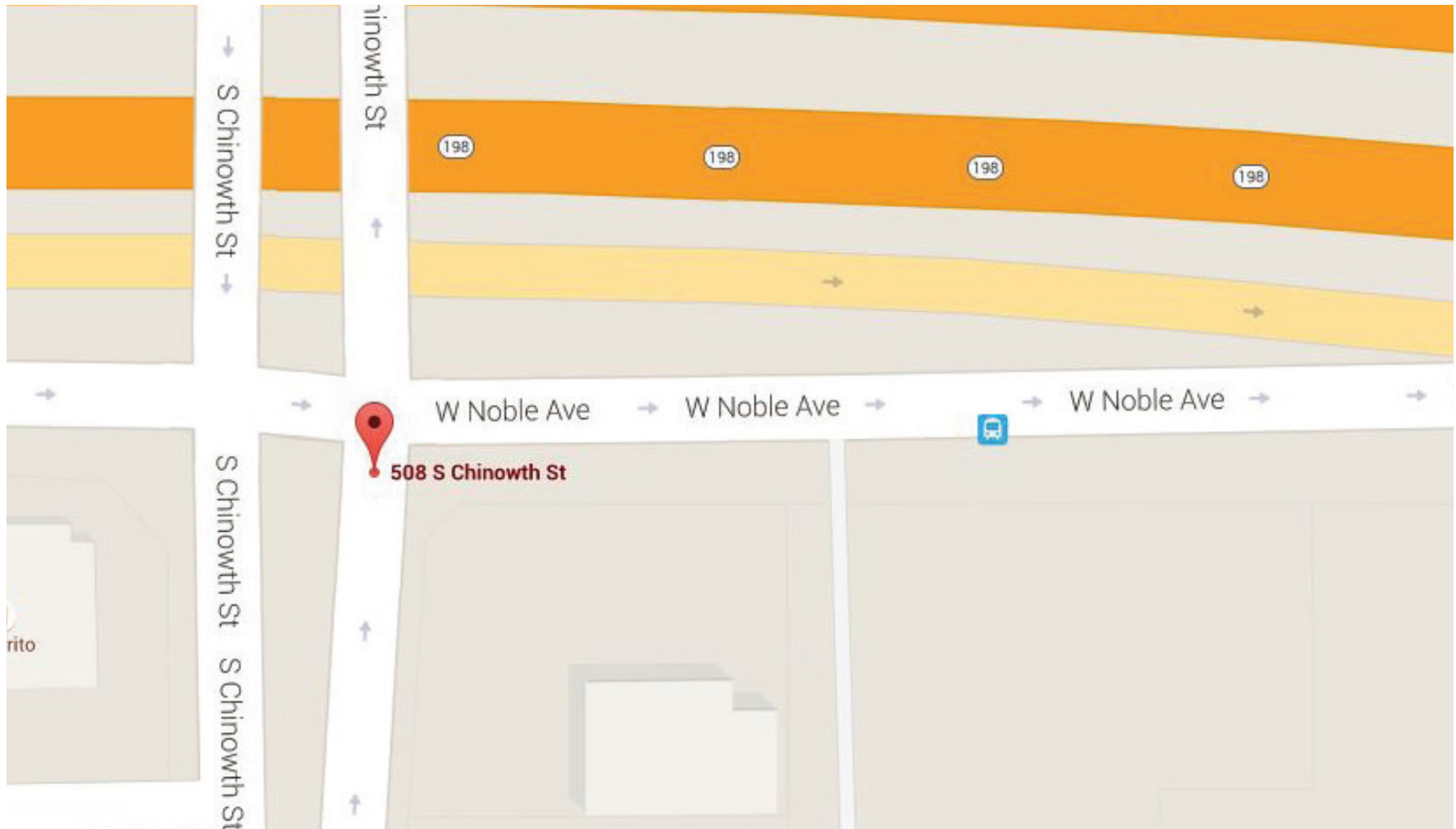


**Contact Broker:**  
Matt Graham  
Lic# 01804235

to learn more, visit: [www.mgdre.com](http://www.mgdre.com)

100 W. Willow St. - STE 301  
Visalia CA 93291  
559.804.9371

## LOCATION MAP



PLEASE NOTE: ALL INFORMATION AND REPRESENTATION MADE HEREIN, WHILE NOT GUARANTEED, HAVE BEEN SECURED FROM SOURCES WE BELIEVE TO BE RELIABLE, HOWEVER, THEY ARE NOT WARRANTED BY MATT GRAHAM & ASSOCIATES AND ARE SUBJECT TO CHANGE WITHOUT NOTICE.



## PROPERTY LAYOUT



PLEASE NOTE: ALL INFORMATION AND REPRESENTATION MADE HEREIN, WHILE NOT GUARANTEED, HAVE BEEN SECURED FROM SOURCES WE BELIEVE TO BE RELIABLE, HOWEVER, THEY ARE NOT WARRANTED BY MATT GRAHAM & ASSOCIATES AND ARE SUBJECT TO CHANGE WITHOUT NOTICE.