



1716 11th Ave. - Suite G | Hanford, CA

Property For Lease

1005 N Demaree St
Visalia CA 93291
559.754.3020

GRAHAM | **& ASSOCIATES**

Michelle Felsted
Lic# 01197216
www.mgdre.com

to learn more, visit: www.mdgre.com

PROPERTY DETAILS

Address: 1716 11th Ave. - Suite G | Hanford, CA

Square Feet Available: 1,300 +/- Sq. Ft.

Zoning Office/Retail

Lease Rate \$1050 per month

Lease Type Gross



Additional Comments:

Retail or office space available in Hanford. Space has reception area, waiting area, three private offices, big open workroom and private bathroom. Please call for further details.



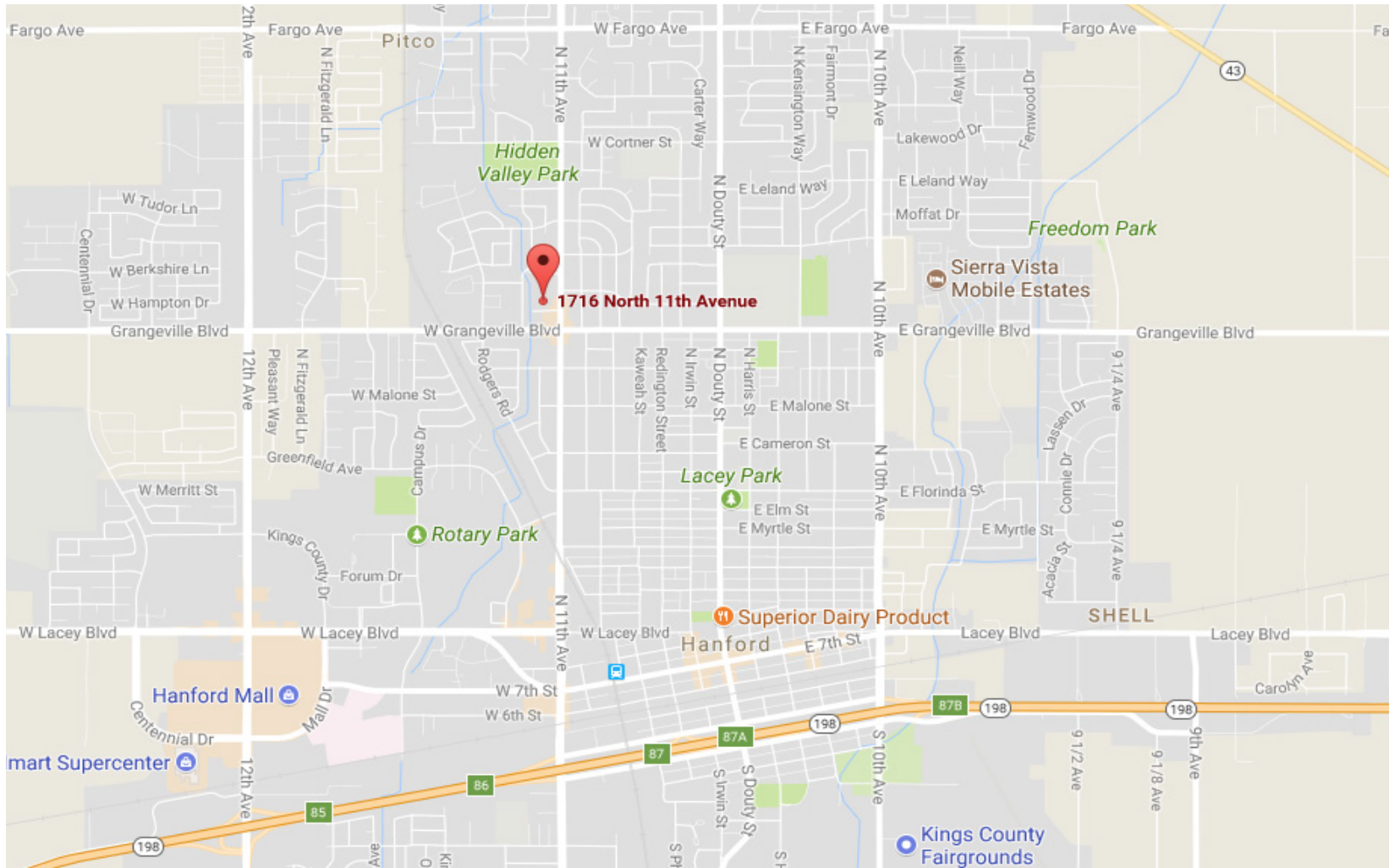
Contact Broker:
Michelle Felsted
Lic# 01197216

to learn more, visit: www.mdgre.com

3714 W Mineral King Ave-
Visalia CA 93291
559.754.3020

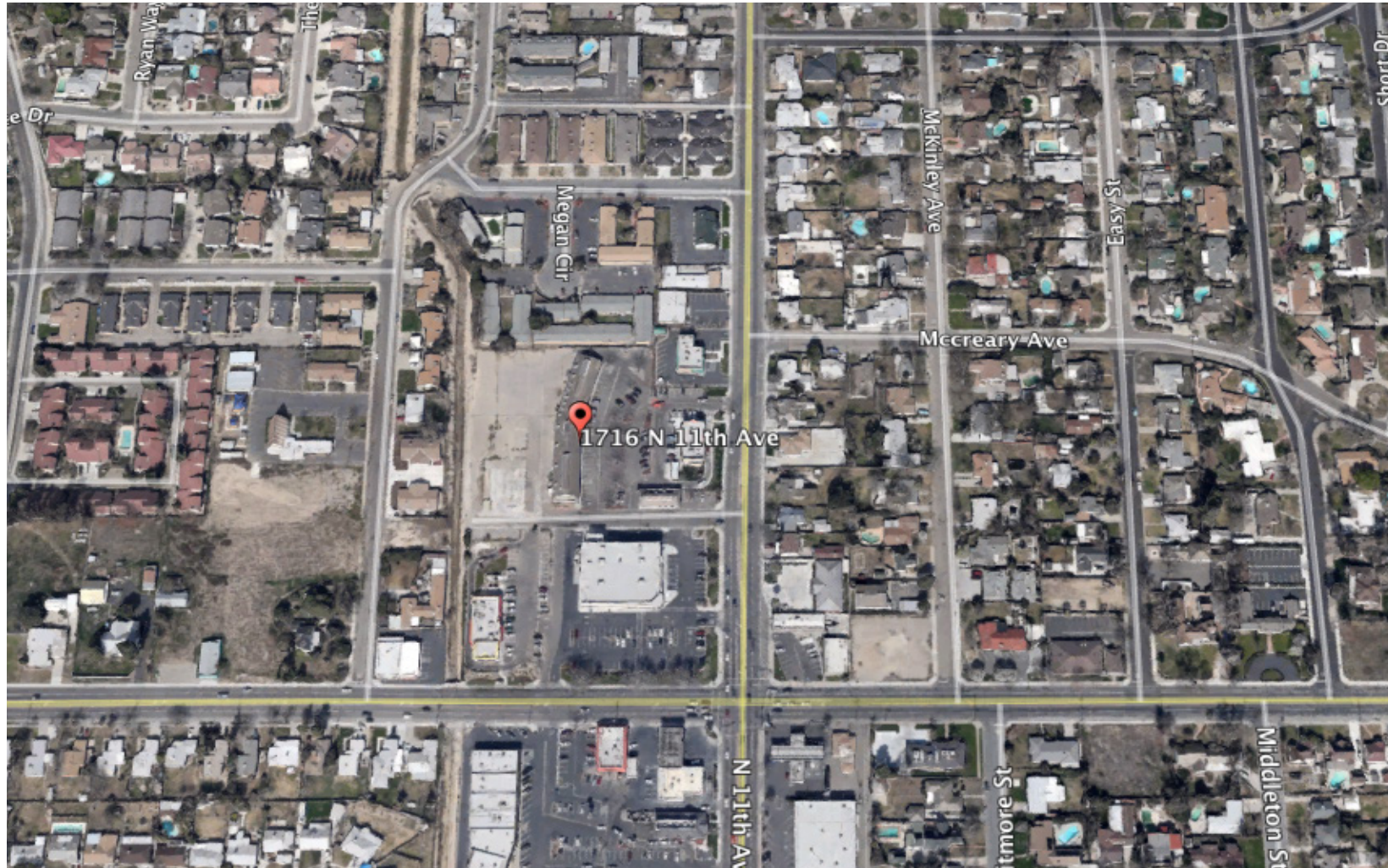
PLEASE NOTE: ALL INFORMATION AND REPRESENTATION MADE HEREIN, WHILE NOT GUARANTEED, HAVE BEEN SECURED FROM SOURCES WE BELIEVE TO BE RELIABLE, HOWEVER, THEY ARE NOT WARRANTED BY MATT GRAHAM & ASSOCIATES AND ARE SUBJECT TO CHANGE WITHOUT NOTICE.

LOCATION MAP



PLEASE NOTE: ALL INFORMATION AND REPRESENTATION MADE HEREIN, WHILE NOT GUARANTEED, HAVE BEEN SECURED FROM SOURCES WE BELIEVE TO BE RELIABLE, HOWEVER, THEY ARE NOT WARRANTED BY MATT GRAHAM & ASSOCIATES AND ARE SUBJECT TO CHANGE WITHOUT NOTICE.

PROPERTY LAYOUT



PLEASE NOTE: ALL INFORMATION AND REPRESENTATION MADE HEREIN, WHILE NOT GUARANTEED, HAVE BEEN SECURED FROM SOURCES WE BELIEVE TO BE RELIABLE, HOWEVER, THEY ARE NOT WARRANTED BY MATT GRAHAM & ASSOCIATES AND ARE SUBJECT TO CHANGE WITHOUT NOTICE.

PROPERTY PHOTOS

